
LÅGAN

A programme for buildings with
very low energy use

www.laganbygg.se

LÅGAN – a programme for buildings having very low energy use– a collaborative project between the Swedish Construction Federation, the Swedish Energy Agency, Region Västra Götaland, Formas and others. www.laganbygg.se

2010-10-08



Objectives

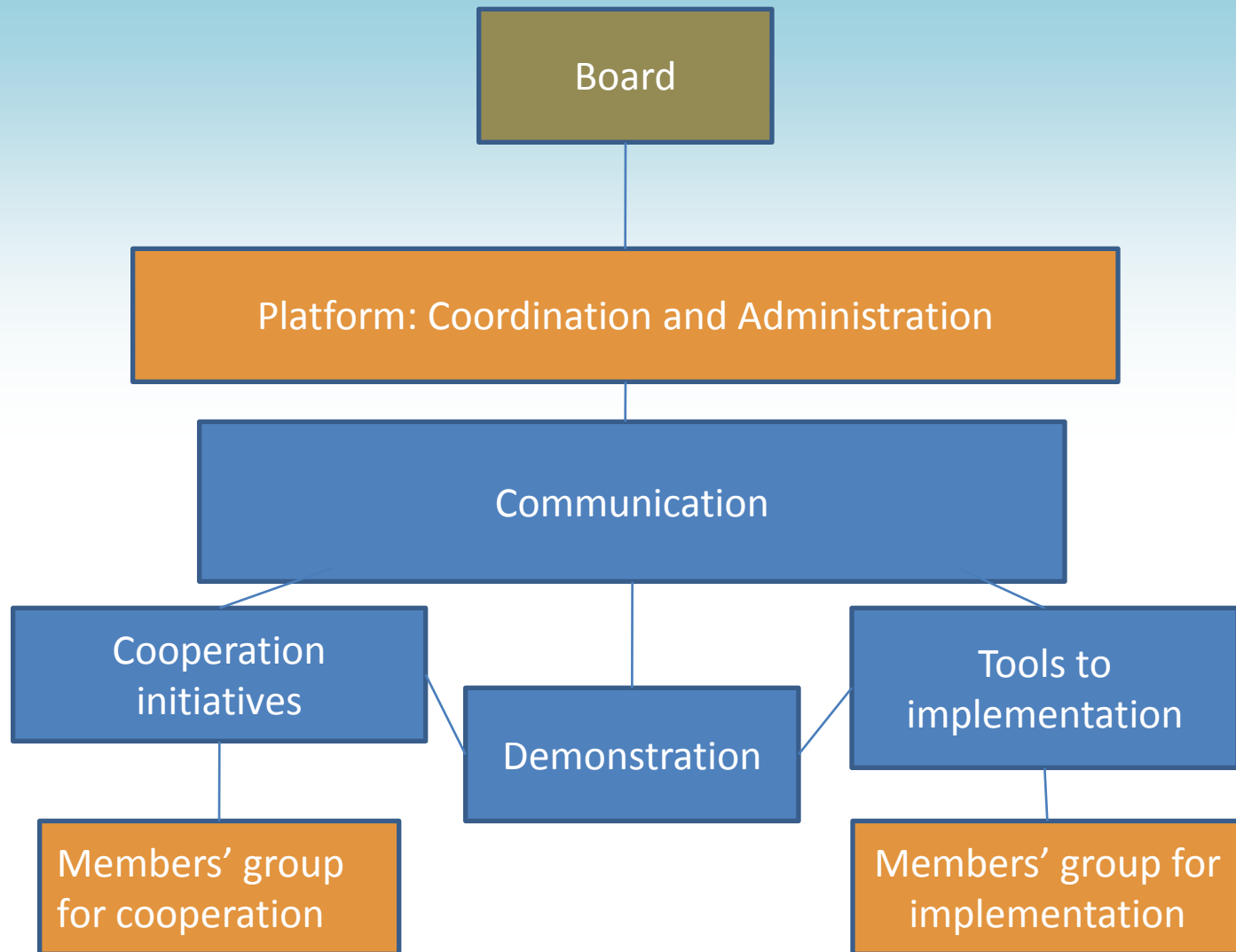
The programme is intended to:

- encourage new construction of and conversion to energy-efficient buildings,
- foster a national market for buildings with low energy use, and
- assist in the establishment of an extensive national body of suppliers of products and services and create confidence in them.

Activity

LÅGAN provides financial support for demonstration projects and local/regional collaboration initiatives. It also encourages new thinking by evaluating and disseminating information from demonstration projects and supporting development projects.

A web-based market review of building development will inspire and facilitate new construction of and conversion to energy-efficient buildings.



LÅGAN – a programme for buildings having very low energy use– a collaborative project between the Swedish Construction Federation, the Swedish Energy Agency, Region Västra Götaland, Formas and others. www.laganbygg.se

Programme

- 5-year programme (2010-2014)
- Budget 60 million SEK
 - 22 million SEK from the Swedish Energy Agency
 - 1 million SEK from VGR 2010
 - 2.9 million SEK from FORMAS-BIC
 - Remainder from industrial sector grants



LÅGAN – a programme for buildings having very low energy use– a collaborative project between the Swedish Construction Federation, the Swedish Energy Agency, Region Västra Götaland, Formas and others. www.laganbygg.se



The Swedish Construction Federation and LÅGAN

The Swedish Construction Federation (BI) is an important actor with broad geographic support, a large number of member companies and good conditions to contribute to implementing development results.

BI has an established R&D activity with regional committees and great involvement in the issues. www.bygg.org



LÅGAN – a programme for buildings having very low energy use– a collaborative project between the Swedish Construction Federation, the Swedish Energy Agency, Region Västra Götaland, Formas and others. www.laganbygg.se



Organisation



Programme leader:
Pär Åhman,
The Swedish
Construction
Federation



Coordinator:
Åsa Wahlström,
CIT Energy
Management



*Responsible from
The Swedish
Energy Agency:*
Dag Lundblad,
The Swedish Energy
Agency



Press contact:
Jenny Weimerbo,
The Swedish Energy
Agency

Board: the Swedish Construction Federation; the Swedish Energy Agency; Region Västra Götaland; Formas; the National Board of Housing, Building and Planning; the Danish Building Research Institute; Bostad AB Poseidon

LÅGAN – a programme for buildings having very low energy use– a collaborative project between the Swedish Construction Federation, the Swedish Energy Agency, Region Västra Götaland, Formas and others. www.laganbygg.se

Demonstration support for building projects

LÅGAN offers **demonstration support for building projects** that aim to lead and demonstrate development opportunities for buildings with low energy use. The support should promote and follow up development of low-energy buildings.

The last dates for applications are 15 November 2010, 2 March 2011 and 3 May 2011.

Criteria, practical information and an application are available at www.laganbygg.se.

Demonstration support

- New construction
 - energy use 50% lower than BBR
- Conversion
 - reduce energy use by at least 50% to give 40% lower energy use than the BBR requirements, or
 - reduce energy use by 75%



LÅGAN – a programme for buildings having very low energy use– a collaborative project between the Swedish Construction Federation, the Swedish Energy Agency, Region Västra Götaland, Formas and others. www.laganbygg.se

Demonstration support

Projects granted support shall:

- have novelty value (new technology, region, building category, variety, production process, system solution, innovative energy supply systems, etc.),
- have a clear environmental and energy profile for household and business energy use,
- make an important contribution to the spread of experience and knowledge,
- use technical solutions and concepts that can be repeated and spread,
- contain an assessment of energy use and, for example, the indoor house environment,
- include information spread.

The results shall be public and be reported in LÅGAN's market review.

Cooperation support for networking

LÅGAN offers **support to regional/local cooperation initiatives.**

The initiatives shall have a clear aim to lead and promote development opportunities through networking for buildings with low energy use.

The last dates of applications are 15 November 2010, 2 March 2011 and 3 May 2011.

Criteria, practical information and an application are available at www.laganbygg.se.

Cooperation support for networking

Projects granted support shall:

- include at least 4 regional/local actors,
- have a clear declaration of intent, product or service with the aim of bringing about new building of or conversions to several low-energy buildings,
- have a clear, measurable goal or declaration of intent that corresponds to LÅGAN's goals.

The result of cooperation should lead to the creation of favourable business opportunities/incentives for the companies that take part and want to be ahead of the field. Support will primarily be awarded to established initiatives.

Members' group for implementation

Aim

- Spread results more widely direct to the trade
- Offer advice to the board
- Act as an ideas forum and shed light on the issues that are important to the building trade and property business in order to remove obstacles to widespread market introduction



Market review – a searchable homepage

- A presentation of good examples to strengthen the market for low-energy houses
- Shows what is happening nationally and which actors and regions are actively working to improve energy efficiency
- Quantitatively assesses how much the new building of and conversions to low-energy houses contribute to reducing energy use nationally
- Launched in April 2011



LÅGAN – a programme for buildings having very low energy use– a collaborative project between the Swedish Construction Federation, the Swedish Energy Agency, Region Västra Götaland, Formas and others. www.laganbygg.se



LÅGAN - FÖR ENERGIEFFEKTIVA BYGGNADER



Sök

Fredag 08 oktober 2010

- ▶ Om LÅGAN
- ▶ Nyheter
- ▶ Aktuella projekt
- ▶ Marknadsöversikt
- ▶ Demonstrationsstöd
- ▶ Samverkansstöd
- ▶ Press
- ▶ Publikationer
- ▶ Länkar
- ▶ In English

LÅGAN – a programme for buildings having very low energy use

The programme started in 2010, and is planned to run for five years. It provides financial support for demonstration projects and local/regional collaboration initiatives. It also encourages new thinking by evaluating and disseminating information from demonstration projects, and by supporting development projects.

The programme is intended to

- encourage new construction of, and conversion to, energy-efficient buildings,
- foster a national market for buildings having low energy use, and
- assist the establishment of an extensive national body of suppliers of products and services, and to create confidence in them.

LÅGAN is a collaborative project between the Swedish Construction Federation, the Swedish Energy Agency, Region Västra Götaland, Formas and others. For further information, please visit www.laganbygg.se

LÅGAN SKA STIMULERA TILL ENERGIEFFEKTIV NY- OCH OMBYGGNAD, SYNLIGGÖRA EN NATIONELL MARKNAD FÖR BYGGNADER MED LÅG ENERGIANVÄNDNING SAMT BIDRA TILL ETT BRETT NATIONELLT UTBUD AV LEVERANTÖRER AV PRODUKTER OCH TJÄNSTER OCH TRYGGA BESTÄLLARE.

www.laganbygg.se

LÅGAN – a programme for buildings having very low energy use– a collaborative project between the Swedish Construction Federation, the Swedish Energy Agency, Region Västra Götaland, Formas and others. www.laganbygg.se